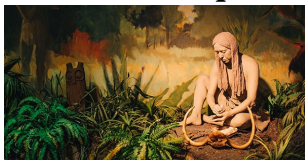




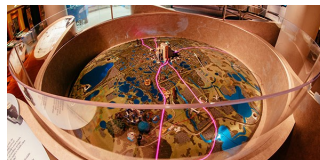
Organized by the American Museum of Natural History in New York, *Giants, Dragons & Unicorns: The World of Mythic Creatures* features unique cultural objects to highlight the surprising similarities and differences in the ways people around the world envision and depict mythic creatures. The exhibition includes models and cast fossils of prehistoric animals to investigate how they could have - through misidentification, speculation, fear, or imagination - inspired the development of several legendary creatures.



First People



The Theme-Park Era



Aviation



We will stop first for breakfast (oyo) at



Trip Includes:  
 R/T TRANSPORTATION  
 BREAKFAST (OYO)  
 DOCENT LED MUSEUM TOUR  
 BUS DRIVER GRATUITY NOT  
 INCLUDED IN PRICE

SCC MEMBERS – **SCC COMMUNITY HALL** –  
 1910 S PEBBLE BEACH BLVD.

KP MEMBERS – **KINGS POINT NORTH CLUB-  
 HOUSE LOBBY** – 1900 Clubhouse Drive,

Motor Coach boarding will *begin 15 minutes prior to departure, please allow time to check in with escort to obtain bus boarding pass and tickets if needed.*